

WELCOME



Key information

- School aims
- Expectations for students
- Parent/carer support
- Plans for transition and activities week



School Aims

The Most Employable Students in Corby



There is the opportunity tonight for you to tell us something more about you!

What are your skills currently?

What skills are you hoping to develop whilst you are here at CTS?

Do you already have a goal or an ambition that we can help you achieve?

What does student care look like at CTS?



Student SUPPORT

Working together for you

Safety and Wellbeing

If you are concerned about your mental health and wellbeing, or there is something affecting your safety inside or outside of school, ask to speak to the safeguarding team.

Relationships

- Report Bullying or unkind behaviour*
- Report discrimination*
- Support with teacher conversations when things have gone wrong in lessons
- Mediation when your friendships have broken down.

Attendance

- Lateness to school - help getting to lessons
- Student Appointments
- Leaving school unwell
- Supporting you when returning from a time out of school

Values and Standards

- Report a conduct concern*
- Support meeting our uniform expectations
- Mentoring, or other intervention sessions
- Student support plan
- Student monitoring plan
- Supervised lunches

Celebrating Success

- Attendance certificates
- Reward Points celebrations
- Sharing positive progress with home

Health Care

- Medication queries
- New injuries that need support in school
- Feeling unwell
- First Aid

Student Enquiries

- Lost timetables
- Lost property
- Card replacements
- Confiscated phones
- Log-ins
- Contact with home

Student Support Desk is open before school at break, lunch, and after school. Or email: studentsupport@corbytechnicalschool.org

***Written forms available if you would find that easier than talking**

TUTOR

"I will see you every day, and encourage you to be the best you can be. We will learn about PSHE and careers together, and we will be a part of a tutor group that supports one another and competes against other tutor groups in competitions!"

EDUCATION WELFARE OFFICER (MISS ADAMS)

"I make sure that students attend school as much as they possibly can. I also support you when you come back into school if you have had a long time away."

STUDENT SUPPORT OFFICER (MISS MOORE)

"I help you when things go a bit wrong, or when you are finding part of your school life difficult. For instance, if you make a mistake with your behaviour in lessons or need support managing relationships around school."

STUDENT SUPPORT YEAR 7-9

PASTORAL LEAD (MRS BUFFINI)

"I keep an eye on all of the students in your year groups, and will make sure you get the support you need from all the staff in our team. Sometimes I will be in touch with parents/carers or have a meeting with you if I think you need something extra to make the most of your time in school. I also organise rewards and celebrations."

HEALTH CARE OFFICER (MRS WINFIELD)

"I help you if you have an injury, or if you have an ongoing medical condition. I will also be there for you if you need first aid or become unwell at school."

STUDENT SUPPORT MANAGER (MRS GEE)

"I work with the student support officers to make sure the reflection centre is a place you can make progress in, and I organise the team so that all of your needs are met."

SAFEGUARDING LEAD (MRS TOYE)

"If there is something making you feel unsafe, either inside or outside of school, or there is something affecting your wellbeing, I am there to help so that you can feel confident and secure."



Who should I contact at CTS?



Student Support

Email:
studentsupport@corbytechnicalschool.org
Phone:
01536 213100 Option 2

- Learning support
- Homework
- Student Wellbeing
- Uniform enquiries
- Behaviour queries
- Physical health (e.g. medications and injuries/health conditions)



Enquiries

Email:
enquiries@corbytechnicalschool.org
Phone:
01536 213100 Option 3

- Finance (including pupil premium)
- Wisepay queries
- Trips and Visits
- School Events
- Parent/Carer evenings
- Permissions and consent
- Student data changes (e.g. address)



Attendance

Email:
absence@corbytechnicalschool.org
Phone:
01536 213100 Option 1
or use Edulink function

- Reporting a student absence
- Known absences (planned)
- Appointments
- Lateness to school

Rewards & celebrating Success



Annually
Celebration
Evening



Biannually
CTS Festival 'CTS
FEST'



Termly
Golden Ticket
Draw



**Weekly
Reward
Assemblies**



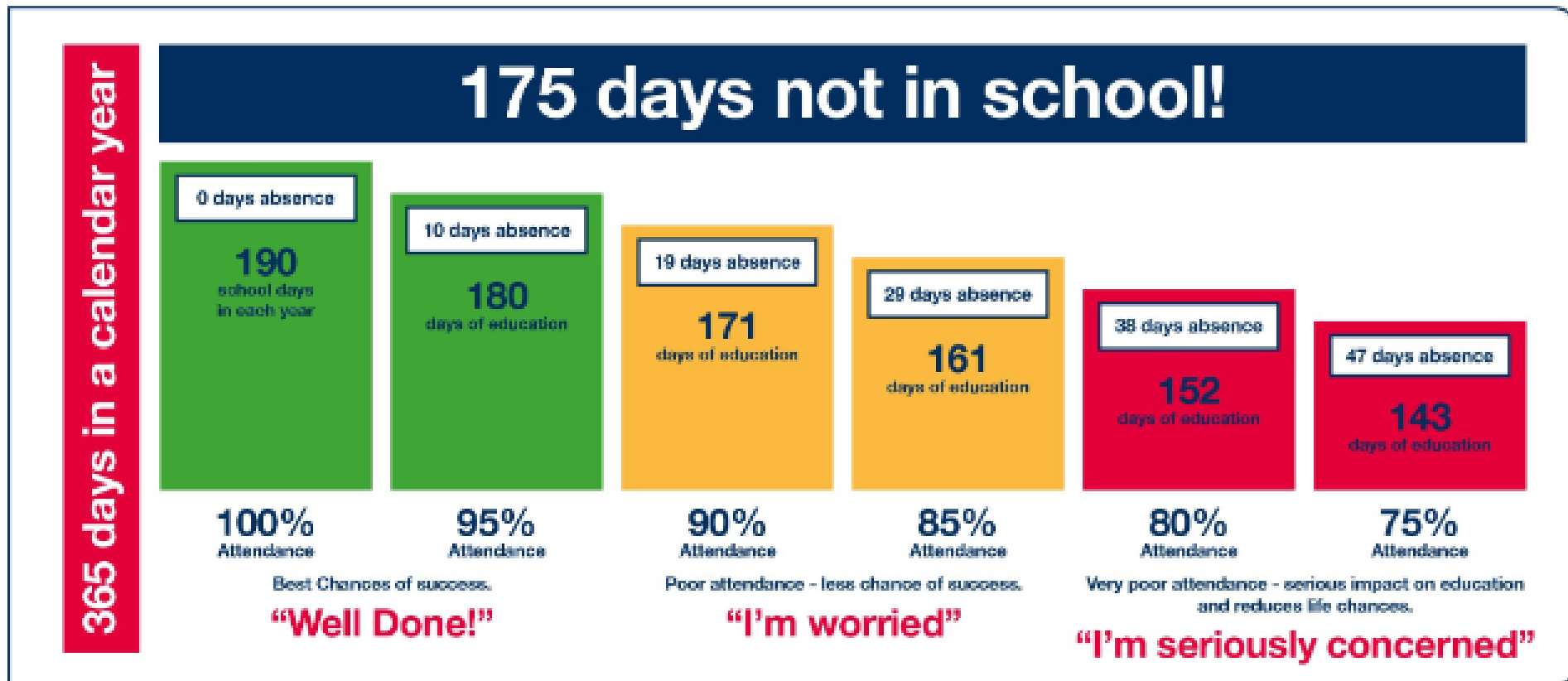
Daily
Lesson star

	Rewards	Boundaries
Platinum	<ul style="list-style-type: none"> - Afternoon Tea with Headteacher or a member of the senior team. - Trophy awarded at special awards evening - Invite to all movie mornings - Certificate 	450 + cumulative points
Gold	<ul style="list-style-type: none"> - Certificate - Invite to movie mornings - Invite to all CTS Fest - Invite to special awards evening - Pizza Lunch 	300 + cumulative points
Silver	<ul style="list-style-type: none"> - Invite to CTS Fest - Pizza lunch - Certificate 	150 + cumulative points
Bronze	<ul style="list-style-type: none"> - Certificate 	50 + cumulative points

Achievements	Points
*Golden Ticket (linked to behaviour curriculum)	5
Lesson Star	3
Outstanding work/effort/contribution	3
Helpful/kind behaviour	3
*Excellent homework	2
Employability skill	2
Core British Values	2
School wide event contribution	5
Leading significant performance	10
Subject Progress Award	25
Subject Achievement Award	25
Student of the Year	50
Creative Arts Award	50
Resilience Award	50
Technical Award	50
Sports Award	50
Innovation Award	50
Contribution Award	50
Citizenship Award	50
Tutor Award	25

Attendance

The school is open for 31.25 hours for students in all years.

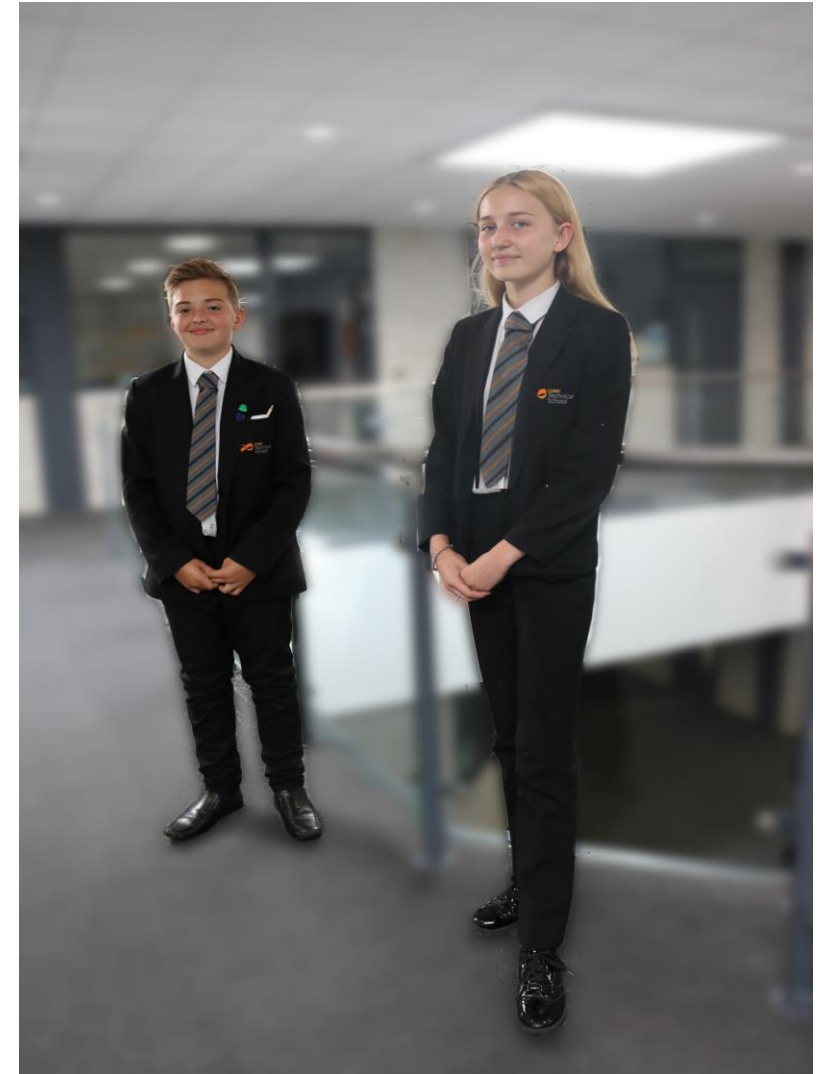


8:15-8:30	Arrival
8:45-9:10	Tutor Time
9:10 - 10:10	SESSION 1
10:10 - 11:30	SESSION 2 (Inc. 20-min Morning Break from 11.10 – 11.30)
11:30 - 12:30	SESSION 3
12:30 - 14:00	SESSION 4 (Inc. 30 min Lunch Break from 1.30 – 2pm)
14:00 - 15:00	SESSION 5
15:00	End of school Day
15:00 - 16:00	Co-Curricular Activities (optional) every Tuesday/Wednesday Thursday
16:00	All students must leave school

Punctuality

Uniform

We have high expectations of our school uniform and our students wear their uniforms with great pride.



School Uniform and Equipment

You will be expected to be smart and properly dressed at all times. Full uniform must be worn during all times throughout your day in school. Shirts should be tucked in with the top button done up.

Compulsory items that can only be purchased from any uniform supplier (including our supplier)

School Uniform

CTS School tie
CTS blazer or CTS jumper*

PE Kit

CTS polo top

*Students can choose whether to wear a blazer or a jumper. They can wear both and may wish to in cooler weather.

Compulsory items that can only be purchased from any uniform supplier (including our supplier)

School Uniform

Black trousers or knee length skirt
White collared shirt
Black shoes
School bag (any colour)

PE Kit

Black shorts or skort
Trainers (indoor and outdoor)

Optional items that can be purchased from any uniform supplier (including our supplier)

PE Kit

Plain black sport trousers (leggings/joggers)
Plain black sport sweatshirt (not a hoodie)
Orange/black rugby top (from our supplier only)



KS Schoolwear
Unit 7, Trafalgar Road,
Kettering,
Northants,
NN16 8DB.

Email karlsports.schoolwear@gmail.com
Phone: 01536 601731

SHOES

Acceptable - Smart leather/leather alternative shoe. Plain black.

School footwear expectations



Equipment

- 2 x black pens
- Pencil
- Ruler
- Calculator (casio fx-83gt) This should be labelled with your child's name.
- Rubber
- Green pen
- Glue stick
- Large school bag
- Refillable water bottle

Please note students should have natural nails, minimal makeup and jewellery. Jewellery will need to be removed for certain practical subjects.

Role of the tutor

- Each child will be in one of 6 tutor groups.
- During Year 7 for most lessons your child will be taught in tutor groups.
- The tutor will be a key person for your child in school and will deliver our tutor time programme.

7CA

7CO

7TE

7TA

7ST

7SW

Transition Day Friday 11th of July

- Students will attend the school for Transition Day on Friday 11th July
- Students will arrive at 9am
- They will meet their tutor group
- They will experience 3 lessons
- They will need a packed lunch
- Students should arrive in their primary school uniform
- 2:30pm finish
- Students should be collected by an appropriate adult

11th of July

Co-curricular

- We have a variety of after school clubs and academic clubs that take place on Tuesday, Wednesday and Thursday.
- All students can stay on after school until 4pm if they want to attend a club.
- Students must sign in to a club via Edulink so we can check attendance.



Activity week



£50

Trips and visits

- Annual Ski trip
- OAA residential
- Barcelona Trip



WisePAY & Edulink

- Corby Technical School is a cashless school we use WisePAY to make all financial transactions and you can upload money to your account to enable your child to pay for school meals or snacks.
- Account information will be sent to your home address.
- Edulink is our means of communication – and how you can track your child's achievement points, lesson stars, timetable, homework and exams.

Upcoming information

- Transition day Friday July 11th 2025
- Information from school via email (e.g. Wisepay) will be shared between now and September.
- Week 2 - Welcome Event – meet the tutor.

This evening

- Refreshments in the restaurant.
- Meet our Student Support officers and Year 7 ambassadors in the restaurant.
- Tell us more about you! Share any questions (restaurant).
- Meet our SENCO and our librarian (the library)
- Place an order with our uniform suppliers.

THANK YOU FOR ATTENDING THIS EVENING

Part of the
Brooke Weston Trust



CORBY
**Technical
School**